

Iowa City Hospice
Visiting Nurse Association of Johnson County
Iowa Care Community



Resilience

2022

Annual Report and Donor Roll

From our CEO



Through a year full of changes and challenges, Iowa City Hospice, Visiting Nurse Association of Johnson County and Iowa Care Community proved ourselves resilient, realistic, and committed to our mission.


I'm Sara Krieger, CEO of Iowa Care Community. I took over the role when Karla Kamal retired in July, but I am by no means new here. I started with Iowa City Hospice back in 2005. I've been a Certified Hospice and Palliative Care Nurse since 2008, have a bachelor's degree in nursing, and earned a Master of Health Administration degree from University of Iowa.

2022 marked VNA's 73rd year, ICH's 39th year, and Iowa Care Community's first anniversary. It was also a year of dealing with fallout from the COVID pandemic and the flood of healthcare workers leaving the profession. For-profit hospice and home care companies continued to expand, merge and extend their reach.

I'm happy to report we weathered the storms. We discovered new flexibility, and ingenuity. We stood tall, and met our commitment to compassionate care for all of our neighbors.

We couldn't have done it without your support. The generous gifts of time and treasure from our donors warm our hearts and strengthen our spirits. It is inspiring to be welcomed into patients' homes. It's an honor to bring them comfort and confidence. And it is wonderful to be recognized by our community for the work we do.

Thank you.


Sara Krieger
CEO, Iowa Care Community

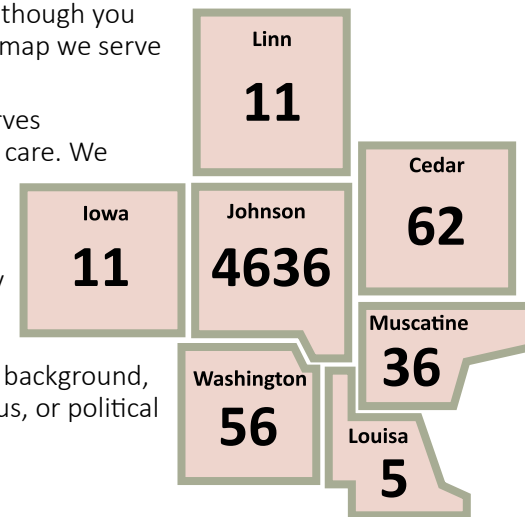
Serving Our Community

Who: The People We Serve

Iowa City Hospice serves anyone with advanced serious illness or a terminal diagnosis who meets hospice admission criteria and lives in our seven-county service area. Visiting Nurse Association brings skilled nursing care to patients deemed homebound (due to surgery, illness, accident, etc.) and referred by their physician. VNA also provides vaccines for ICCSD schools and local businesses, as well as multiple wellness clinics and activities for seniors.

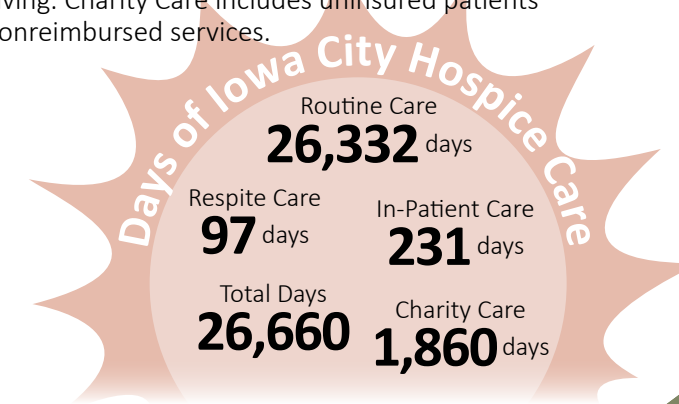
Our patients are Eastern Iowans. Most of them live in the Iowa City area, though you can see by our map we serve many more!

Everyone deserves compassionate care. We discriminate against no one, serving people of every age, gender, race, religion, socioeconomic background, citizenship status, or political beliefs.



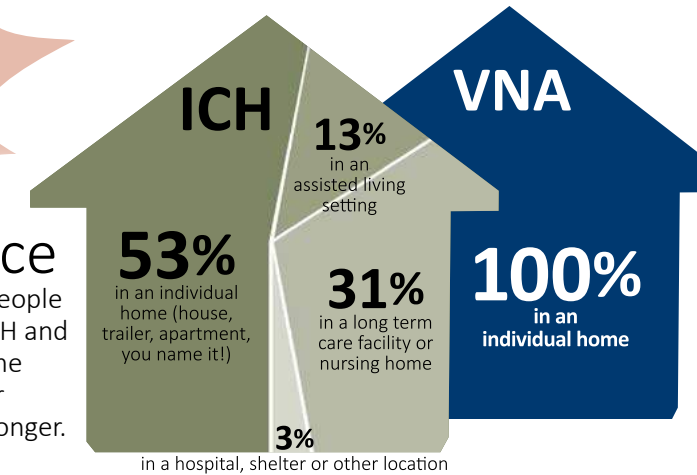
What: The Right Care

Iowa City Hospice brought life-affirming care to more than **450 patients**, who stayed on our service an average of **68.7 days**. Routine Care is typical in-home hospice care. In-Patient Care takes place in a hospital setting. Respite Care gives caregivers a break from caregiving. Charity Care includes uninsured patients and nonreimbursed services.

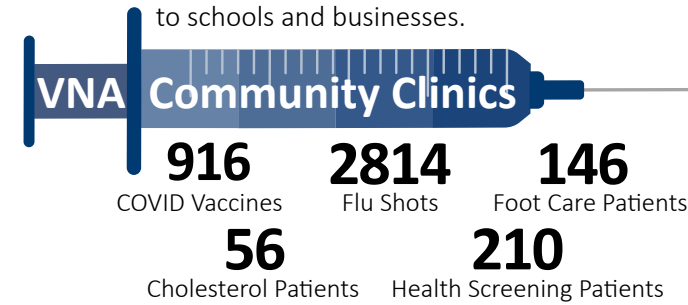


Where: The Right Place

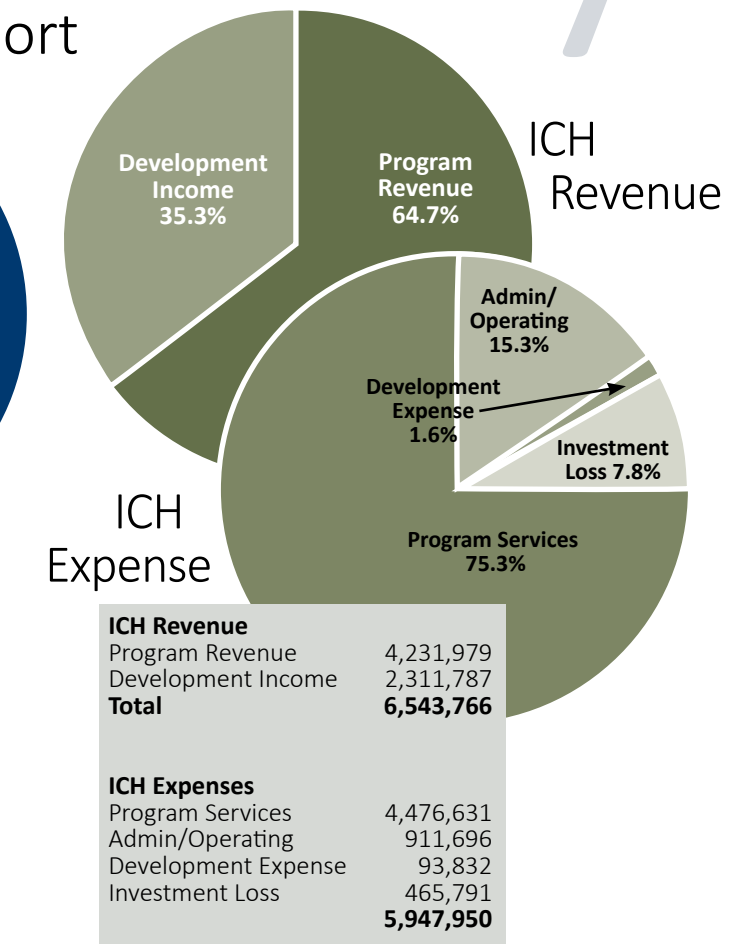
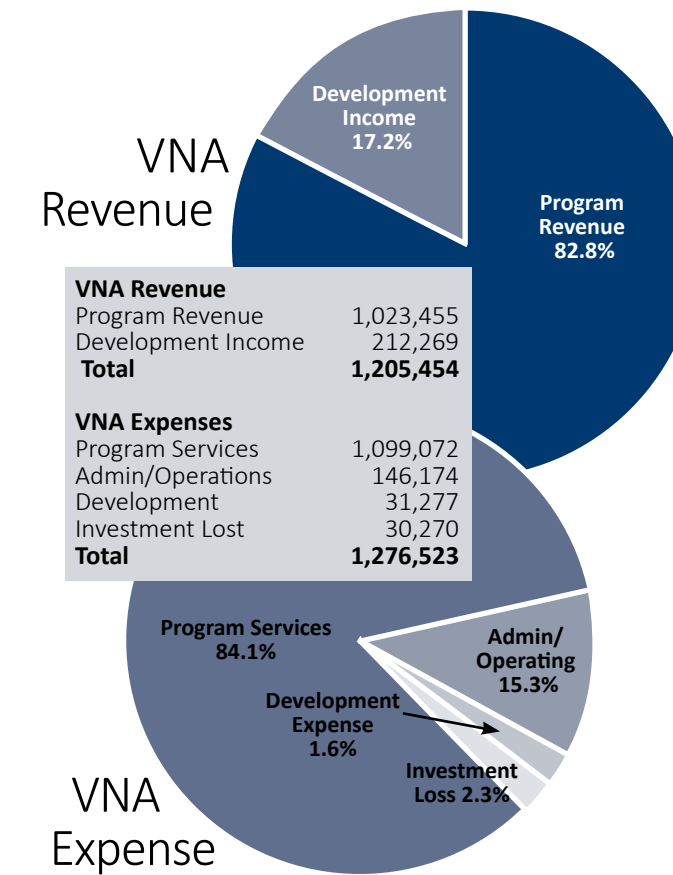
Studies and surveys consistently show most people prefer to receive their health care at home. ICH and VNA help make that happen, providing in-home care that allows our patients to stay in familiar surroundings and retain their independence longer.



In addition to care for homebound patients, VNA provides community clinics. VNA nurses bring foot care, cholesterol testing, and health screening to several Johnson County locations, and vaccinations to schools and businesses.



How: With Your Support



Checking In: Our Affiliation Goals

As Iowa City Hospice and the Visiting Nurse Association of Johnson County planned our affiliation in 2021, commitment to our community was paramount. We were, and are, dedicated to continuing and sustaining our vital work with the cities, counties, patients, caregivers, and donors who have supported us for decades. In 2022, we met or made great strides toward our goals!

Integrated Staff with Shared Culture: A renewed positive spirit fills our work. The division between Iowa City Hospice and VNA is barely visible, as most admin staff serve both entities seamlessly. From public recognition of achievements to a remodeled staff break room, we continually show appreciation for our staff. Extra kudos to our "Culture Club," a volunteer group of employees constantly coming up with new events and delicious ways to celebrate.

Clinical and Organizational Compliance: We have made great strides toward merging ICH and VNA policies and procedures into a simple and sensible system. New roles have been created and staffed to keep us focused on service quality and regulation compliance.

Financial Security: It was a rocky year for the stock market and our endowment sustained investment losses. However, we received some outstanding estate gifts and the generosity of our donors continues to sustain us. Gifts from 2022 enabled us to pay off our mortgage, provide outstanding care, and invest in our staff.

Professional Staff Committed to the Organization's Mission: In spite of the worldwide healthcare staff shortage, we have continued to hire outstanding employees who truly believe in our mission. Many of our staff have been with us more than a decade, and one celebrated her *45th anniversary* with VNA this year!

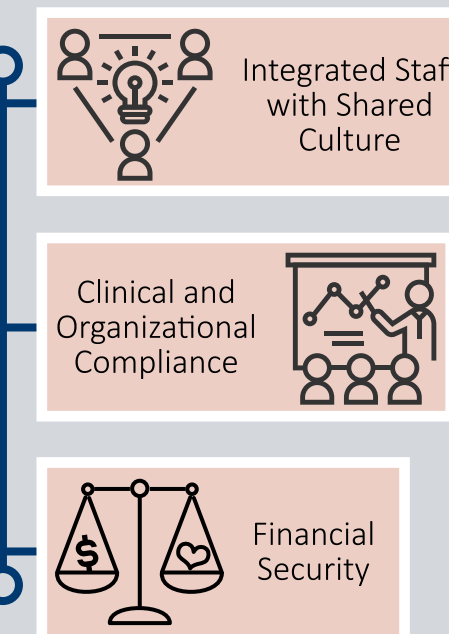
Highest Possible Clinical Outcomes: Our clinical leadership and quality team continually monitor statistics and surveys

to make sure our patients and caregivers are receiving the quality care they deserve. Any problem areas are immediately addressed with improved training, clear expectations, and when necessary, revised procedures.

Resources to Ensure Compassionate Care for Years to Come: Home care and hospice are still very attractive markets for private equity firms and corporations. As more and more for-profit home and hospice care companies set up shop in our area, it is essential to our mission that we offer a viable alternative valuing patients over profits. Statistics show that for-profit hospices increase corporate profits by providing fewer clinician visits and declining patients who have complex or costly care needs. We have stayed true to our commitment to anyone in our community needing our services. We rely on donations, grants, and investments to meet this commitment. We continually revisit our donor records, assess our special events, and research new grants to find new and sustainable funding sources.

Affiliation Goals:

Short-Term Outcomes



Long-Term Outcomes



2022 Donor Roll

\$10,000 and above

Donna Crawford*
Patricia Fisher*
Wayne and Margaret Goode
Revocable Trust
Christine Grant*
Hills Bank and Trust Company
Helen Hubler*
J.P. Morgan
Charitable Giving Fund
Arlene King* Trust
Suellen & John Novotny
Paul Reardon*
Yvonne “Bonnie” Slatton*

\$5,000 to \$9,999

Vicki & Mikel Betts
Albert D and Margaret M
Blenderman Fund
Henry Carson*
Classy Chassy Cruisers, Inc.
DNE Caplan Family Foundation
Gay & Ciha Funeral and
Cremation Service
Iowa City Elk’s Lodge #590
Brenda Johnson
Lee Noel
Barbara & William Palasek

\$2,500 to \$4,999

Anonymous
Barbara Barrows
Deb DeVore
Al Grady* Charitable Fund
Maggie & Dean Jesse
Nancy Sisty LePeau &
John LePeau
SCHEELS
Elizabeth & Richard Schnieders
South Sharon
Amish Sunday School

\$1,000 to \$2,499

Doris & Francois Abboud
ACT
Linda & Ronald Alberhasky
Marjorie K. Albers
Jim & Barb Aldeman
Steven & Jennifer Anderson
Roger Beermann
Mark A. Behlke
William & Nancy Bernau
Karen K. Boileau
Jeff & Sara Braverman
Ann Broderick & Stanley Perlman
Peggy Burke
Alan Burr
Brad Cahoon
Aaron Caplan & Leah Lee
CarePro Health Services
Caring Hands & More LLC
Joyce C. Carman-Baldus
Eve Casserly
Brian Edeker &
Lisa Cramer Edeker
Fin & Feather Inc
Flint Ridge Sunday School
Jeanna French
J. M. Gannon
Sharon E. Garton

*deceased

Joanne & Ted Gladden
Linda Gordon
GreenState Credit Union
Don Haines
James Hayes
Lance Heern &
Laurie Nelson-Heern
Hy-Vee- 1st Ave
Jeremy James
Kalona Community Church
Karla & Gagan Kamal
Edwin C. Keeney
Neera Khera
Ken & Jeanette Kinsey
Bruce Kittle & Jan Krieger
Leff Law Firm, LLP
Jackie Leggett
Lensing Funeral &
Cremation Service, LTD
Christopher & Sarah Leyden
Ina Loewenberg
Richard James
McCann Foundation
John Mehegan & Pamela Geyer
Marjory M. Melick
Middlewest & Southeast
Sharon Sunday School
Mary Ellen Miller*
Mary Noble
John & Kay Nora
Paula Overland Brandt
Ted & Debby Pacha
Patricia Peyton*
Pilot Club of Iowa City
Jim & Mary Pratt
Catherine Pugh
Regina Elementary School
Gerald Rose
Willard & Kathleen Salemin
Kay & Clyde Seery
Sharon Bethel School/Church
Jennifer J. Skarda
Roger Slaughter
Sharon Stang*
Town Square Family Foot Care
Towncrest Pharmacy Corp.
United Iowa Financial
Barb & Dave Wiemer

\$500 to \$999

Zuhair & Ellen Ballas
Ms. JoAnn Benda
Beverly Blades
Brighton Amish Church Sunday
School
BrightStar Care CRDM, LLC
John Brinkmeyer
Richard & Ann Burton
David Calvert
Phyllis J. Canfield
Craig Champion
Dr. Phyllis Chang and Judy
Gerlitz
Abigail Clark & W. Clark
Bryan & Ginny Clemons
Keith Coburn
Coldwell Banker Real Estate
Professionals
Cookies and Dreams
Barton E. Cramer

Mary K. Curry
Sue Delaney
Ellen & Steven Diedrichsen
David & Sally Dierks
John Donelson
Donutland - Iowa City
Shari G. Ellis
Cindy & Glenn Elzey
Pat Ephgrave
Buck Folkedahl
Dorie Forkenbrock
Foster Appliance
Wayne Frauenholtz
Daryl & Nancy Granner
Jed & Patricia Hand
Hawkeye Title & Settlement/
Steve Anderson,
Attorney at Law
Donald Heistad
Amy & Gene Henderson
Hodge Construction Inc
Jessica Holmes
Jay & Nancy Honohan
Betty K. Johnson
Deb Kiesey
Doria & Dan Knebel
Audrey & Jeff Knox
Sara & Matt Krieger
Duane Lewis & Eileen
Shaughnessy
Maria Lukas & Culver Boldt
Nancy A. Lynch
Maggie’s Farm
Wood Fired Pizza
Margaret & Norb Malik
Monica Maloney Mitros &
Frank Mitros
Karen Marek Bacher
Randy & Carol McDonough
Paul Megrew
Barb Mickelson
Kathy Mitchell
Lynn & Gregory Morris
Gloria D. Mueller
Paul & Linda Muhly
Carolyn Norton
Ginger & Art Nowak
Larry & Cathy Pacha
Stan & Patricia Podhajsky
Rebecca B. Porter &
Joseph Dillon
Alex Potter
Quail Creek Golf Course
Glendle Reeve
Relion Insurance Solutions
Ted Rolenc
Scott & Jo Salemin
Franklin Scamman
Kristin & Dion Schminke
Joe Schrock
Mary Schrock*
Konrad Schulze
Jay M. Semel
Margaret Smollen
Texas Roadhouse
VSP Engineering
Traci & Jason Wagner
Marlene Waldis
Janet K. Williams
Tom Zapf

Walk for Dignity Sponsors

Titanium (\$10,000 +)
Hills Bank and Trust Company
Diamond (\$5,000 +)
Dan Ciha & Colette Soult–
Gay & Ciha Funeral Services
Cathy & Larry Pacha
River Products Company, Inc.
Gold (\$1,000-\$2,499)
Caring Hands & More
Fin & Feather, Inc.
GreenState Credit Union
Lensing Funeral & Cremation
Service
Ted Pacha Family
Mary & Jim Pratt
Town Square Family Foot Care
Towncrest Pharmacy
University of Iowa Health Care
Bronze (\$500-\$749)
CarePro Home Medical
Coldwell Banker Real Estate
Professionals
Hawkeye Title
Knebel Windows, Inc.
MidWestOne Bank
SCHEELS All Sports

Employee Donors

Cheryl Adam
Barbara Barrows
Aaron Burmeister
Maurie Campbell
Chick Carroll
Sonya Clements
Jennifer Damon
Karen DeGroot
Debra DeVore
Derrick Droz
Kim Erlandson
Diane Jacobsen
Karla Kamal
Angelika Kieffer
Sara Krieger
Sharon Lovetinsky
Lynn Morris
Deanne Schwarting
Sarah Valiga
Melinda Wings

Ways to Give

As 501(c)(3) nonprofit
organizations, Iowa Care
Community, Iowa City Hospice,
and VNA reinvest every
dollar earned or donated into
patient care, staff support,
and community service. Every
gift helps us continue our
vital services and secure a
sustainable future. Endowment
gifts are investments in a stable
future through the Community
Foundation of Johnson County.

Planned giving: being
remembered in your will is an
honor we do not take lightly.
Please consult your lawyer or
financial professional to include
us in your estate plans.

Find complete donor listings at
iowacityhospice.org/annual_report

Leadership

Iowa Care Community Board of Directors

Catherine Pugh, Chair, Executive Committee Chair
Owner/Agent, Urban Acres Real Estate

Nicole Brogden, Chair-Elect
Associate Professor, Department of Pharmaceutical Sciences and
Experimental Therapeutics, the University of Iowa College of Pharmacy

Ben Evans, Treasurer, Finance Committee Chair
Employee Benefits Specialist, Relion Insurance Solutions

Steve Anderson, Secretary
Attorney, Anderson Houghton Law

Cynthia Schrock, Past Chair
VP, Branch Manager, MidwestOne

Randy McDonough, QAPI Committee Chair
Pharmacist, Owner, Towncrest, Solon Towncrest, and Towncrest
Compounding Pharmacies

Connie Alt
Shuttleworth & Ingersoll Law Firm

Jeffrey Jarrett
Vice President, F&M Savings Bank

Janice Miller
Faculty, University of Iowa College of Nursing

Michelle Nederhoff
Employee Benefits Specialist, Relion Insurance Solutions

Dr. Minyon Rittgers-Easton
Physician, MRE Family Care Clinic

Ben Russell
Realtor, Urban Acres

Tammy Sebolt
Nurse Manager, UIHC

Iowa Care Community Leadership

Sara Krieger
Chief Executive Officer

Karen DeGroot
Chief Financial Officer

Sara Caven
Clinical Director

Michelle Weckmann, M.D.
Medical Director

Karen Cox
Director of Human Resources

Mike Zieser
Director of Information Systems

Pete Milder
Director of Finance and Operations



Iowa City Hospice
1526 Sycamore Street
Iowa City, IA 52240
800-897-3052
www.iowacityhospice.org



VNA of Johnson County
1524 Sycamore Street
Iowa City, IA 52240
866-862-6877
www.vnaic.org



Iowa Care Community
1522 Sycamore Street
Iowa City, IA 52240
800-897-3052
www.iowacarecommunity.org

Ask for Us By Name!

All hospice and home care is not the same!

Iowa City Hospice and Visiting Nurse Association of Johnson County have spent decades building their reputations by providing compassionate health care at home.

We have a lot of competition, which can lead to confusion. Sometimes we are contacted by caregivers and patients who thought they enrolled in our services, only to discover they signed up with a different agency. To make sure your hospice care is coming from Iowa City’s only community-based nonprofit hospice, **ask for Iowa City Hospice by name.** Home care referrals typically come from physicians, so if you want Visiting Nurse Association nurses and therapists, **tell your doctor you prefer VNA services.**

What makes ICH and VNA better choices? **We put patients over profits.**

By our nonprofit charters, we have a **mission to serve our patients and community.** Profit-focused corporations have to focus on shareholder returns.

Our objective is **what’s best for the patient and their individual goals of care.** We take patients of any income level or social status, and provide the best possible care for those with even the most expensive health conditions.

All our decisions are made right here in offices in the heart of our territory. We’re not building nationwide networks or investment portfolios, so we can concentrate on serving our neighbors.

How can you tell if a hospice or home care organization is a nonprofit? Visit their website – if their URL ends in .org, chances are they are a nonprofit. If it ends in .com, most likely not. If they accept donations, look for their 501(c)(3) status, which they’ll definitely mention for tax purposes. You can also search the internet for nonprofit tax filings and charity ratings.